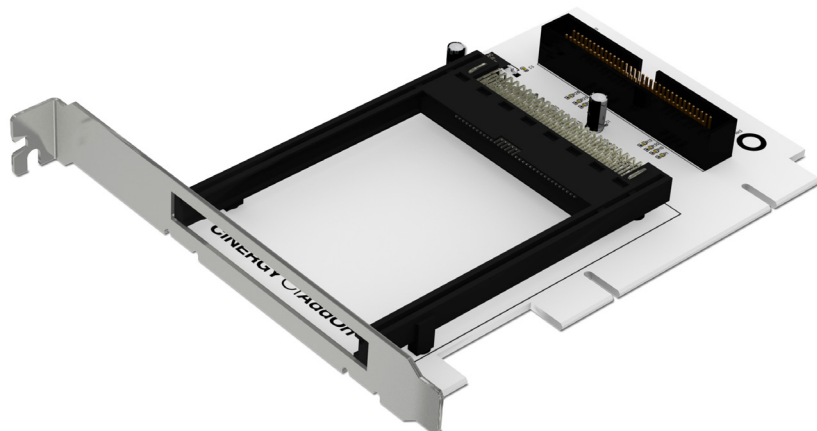


# CINERGY CI ADD ON

The pay TV extension for Cinergy S2 PCI HD and Cinergy C PCI HD



- CI connection for Pay TV reception
- SDTV and HDTV compatible
- Suitable for Cinergy S2 PCI HD and Cinergy C PCI
- Easy-as-pie connection via ribbon cable

## The pay TV extension

So you're a proud owner of a Cinergy S2 PCI HD or Cinergy C PCI for DVB and high-definition TV reception... And you now want your pay TV subscription available on your computer? It's dead easy! Simply plug the Cinergy CI AddOn into an available PCI slot on your computer and connect it to one of the TV cards mentioned here using the cable provided. Last, plug your pay TV smart card into the corresponding CAM (neither included in the scope of delivery) and insert it into the slot of the Cinergy CI AddOn. You're done!

## Full HD resolution possible

From now on, you can watch and record all the encoded TV programs offered by your TV provider with your Cinergy S2 PCI or Cinergy C PCI. All common codecs are fully supported to ensure that you can always enjoy your pay TV at its best resolution, whether it is broadcasted in standard format, high-definition (HDTV) or anything in between.

## What else do I need?

You need a computer with a Cinergy S2 PCI HD or Cinergy C PCI digital TV card. With your pay TV contract, which incurs additional charges, your pay TV provider supplies you with a so-called smart card. Insert this smart card into a compatible CAM (Conditional Access Module). Then insert the CAM with the smart card into the Common Interface slot in the Cinergy CI AddOn. That's all there is to it! If you want to enjoy high definition TV, other components of your computer have to be „HD ready“ (such as your graphics board, monitor etc.).

# CINERGY CI ADD ON

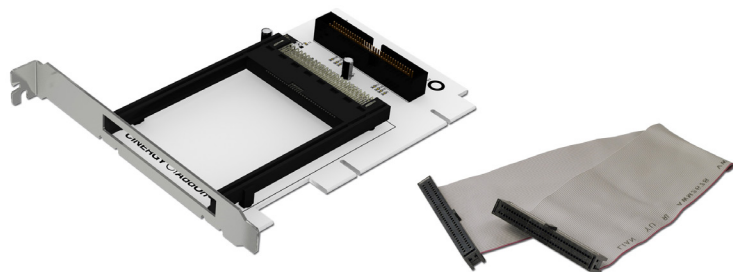
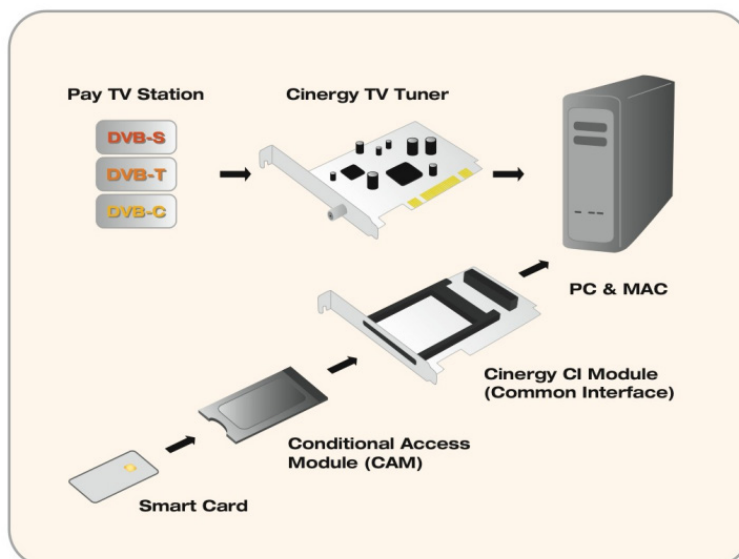
The pay TV extension for Cinergy S2 PCI HD and Cinergy C PCI HD

## System requirements

- Cinergy S2 PCI or Cinergy C PCI
- 2.0 GHz Intel / AMD CPU / Multi-core for HDTV
- 1 GB RAM / 2 GB for HDTV
- Graphic card with hardware acceleration for HDTV
- One free PCI Slot
- Internet connection for driver and software download
- Windows XP SP3 (32 Bit) / Windows Vista SP2 (32/64 Bit) / Windows 7 SP1 (32/64 Bit) / Windows 8 (32/64 Bit)

## Scope of delivery

- Cinergy CI AddOn
- Ribbon cable
- Service card



Article Number: 10545  
EAN-Code: 4017273105451  
Warranty: 24 month  
Internet: [www.ferratec.com](http://www.ferratec.com)

