

Please check which TV card you have installed before you start the **TVConfig.EXE**.

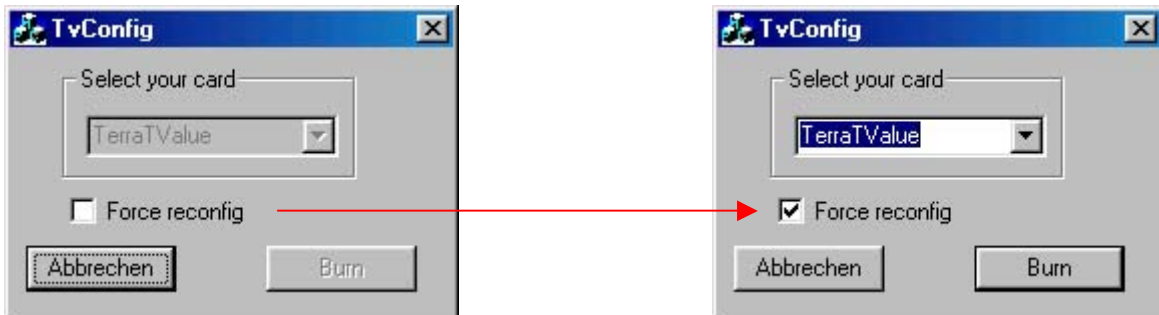
The following cards are available:

TerraTValue:	Mono TV sound
TValue Radio:	Mono TV sound , Stereo radio
TerraTV+:	Stereo TV sound, connector for ActiveRadio upgrade
TerraTV Radio+:	Stereo TV sound, Stereo radio with RDS support.

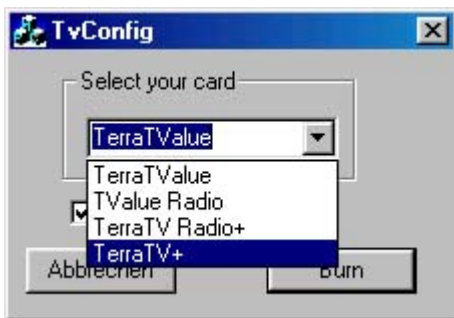
You will find the name of your TV card on the original packaging and on a sticker on the TV tuner of the card.



Confirm the message with [OK].



Check the „Force reconfig“ option.



Choose your TV card from the list and click [Burn].



Confirm the message with [OK] and restart your system.